

# Boats-Yachts.net

*International Yachtbrokerage*

*The Owner's Website*

## *Paradise Isle*



<b>Builder:</b>	<b>:Compass Yachts</b>	<b>LOA</b>	<b>:14.10m(47ft)</b>
<b>Class</b>	<b>:Offshore Cruiser</b>	<b>LWL</b>	<b>:</b>
<b>Year</b>	<b>:1991</b>	<b>Beam</b>	<b>:4.18M(14ft)</b>
<b>Construction</b>	<b>:GRP</b>	<b>Draft Max</b>	<b>:1.82M(6ft)</b>
<b>Type</b>	<b>:Offshore Crusier</b>	<b>Draft Min</b>	<b>:</b>
<b>Keel</b>	<b>:Modified Full cutaway aft</b>	<b>Displacement</b>	<b>:12,470Kg.</b>
<b>Rig</b>	<b>:Sloop</b>	<b>Fuel Tank(s)</b>	<b>:3 total 500Litres</b>
<b>Designer</b>	<b>:</b>	<b>Water Tank(s)</b>	<b>:3 total 600Litres</b>
<b>Engine (s)</b>	<b>:Perkins 4136 – 80HP</b>	<b>Holding Tank(s)</b>	<b>:No</b>
	<b>:</b>	<b>Grey Tank(s)</b>	<b>:No</b>
<b>Speed</b>	<b>:9 knots</b>	<b>Accommodation</b>	<b>:5 in three sleeping cabins</b>
<b>Consumption</b>	<b>:</b>		<b>:</b>

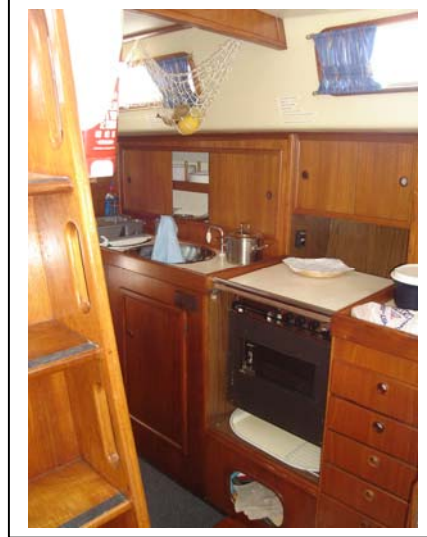
**Asking Price:- €160,000**

Whilst every care has been taken in their preparation, the correctness of these particulars is not guaranteed. The particulars are intended only as a guide and they do not constitute a term of any contract. A prospective buyer is strongly advised to check the particulars and where appropriate at his own expense to employ a qualified Marine Surveyor to carry out a survey and/or to have an engine trial conducted which if conducted by us shall not imply an liability for such engine on our part.

## *Paradise Isle*

Page 2

### Galley: -



### Mechanical systems: -



Mechanical steering, Perkins 4136, Paguro 3000, 4KW generator

### Electrical systems: -

Generator: PAGURO 3000, 220 V 4KW  
Batteries: 3 x 175 Ah, 1 x 150 Ah

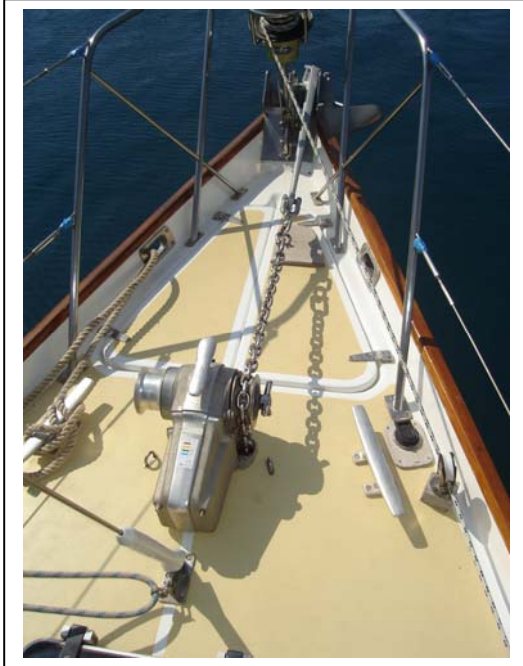
### Sails, Winches & Spars: -

Rig: Sloop, Aluminium Mast  
Winches: Lewmar (8)  
Sails: Mainsail, Stormsail, Roller Furling Genoa(Profurl)  
2 Spinnaker, 1,5 und 2,3 oz.

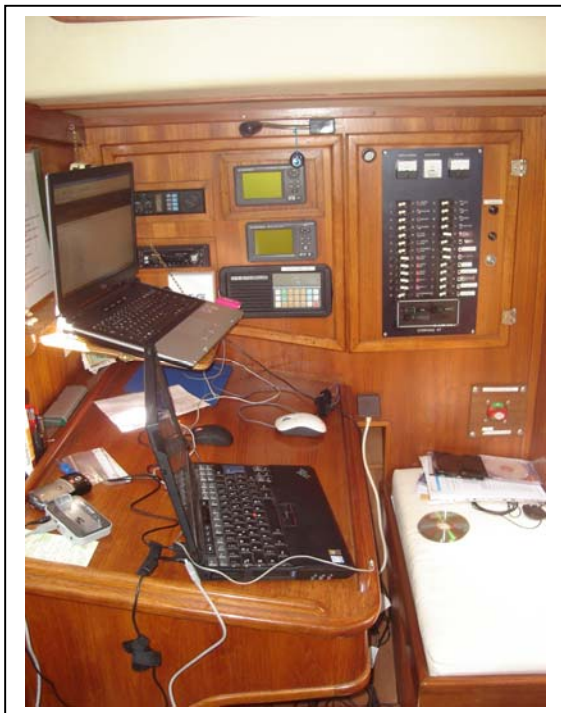
## *Paradise Isle*

Page 3

### Deck Equipment: -



### Navigation Equipment:-



#### Instruments:

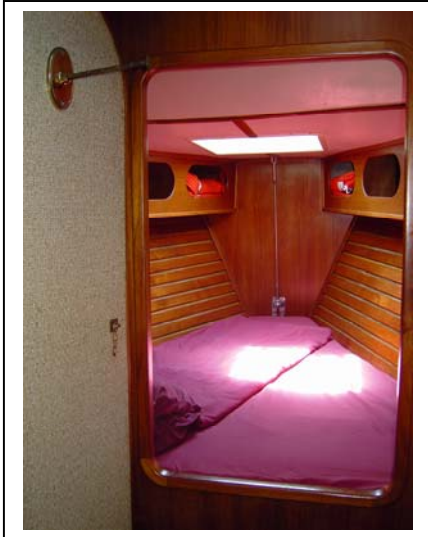
B & G : Wind, Log, Speed  
Autopilot: Ratheon ST 7000  
GPS und Navtex: Furuno  
VHF: MC-722 und SEA 322



## *Paradise Isle*

Page 4

### Accommodation:-



Forecabin



Side Cabin to Starboard



Aftcabin

Maincabin>>>>>>>



### Safety Equipment:-

Liferaft  
Lifejackets  
Plus

### Tender & Sport. Equipment:-

Gemini inflatable dinghy  
Mercury 15HP outboard

## ***Paradise Isle***

**Page 5**

### **Ground Tackle:**

Lofrans Tigress Electric anchor windlass  
CQR  
Danforth  
80m rode

### **General Equipment**

Radio and CD: Pioneer DEH 2150, DEH 1150  
Watermaker  
Hot & Cold Domestic Water System

### **Comments: -**

A fine example of a strongly built offshore cruising yacht providing a safe seakindly yacht designed to sail the world in comfort.

**Lying: - Marmaris**

Contact [listing@boats-yachts.net](mailto:listing@boats-yachts.net) for further information or appointment to view.